

VILLA CAN SINATRA



"Staying in Can Sinatra is like discovering the peacefulness of an oasis within the hectic lifestyle of an island such as Ibiza at the same time. We would love to welcome you into one of our most cherished properties and tend to you and your needs accordingly, in the same way that we treat all of our clients; with dedication and professionalism. At Can Sinatra we are pleased to offer you a minimalistic style villa that is fully equipped throughout and which stands out for its incredible decor for you and your guests to enjoy."

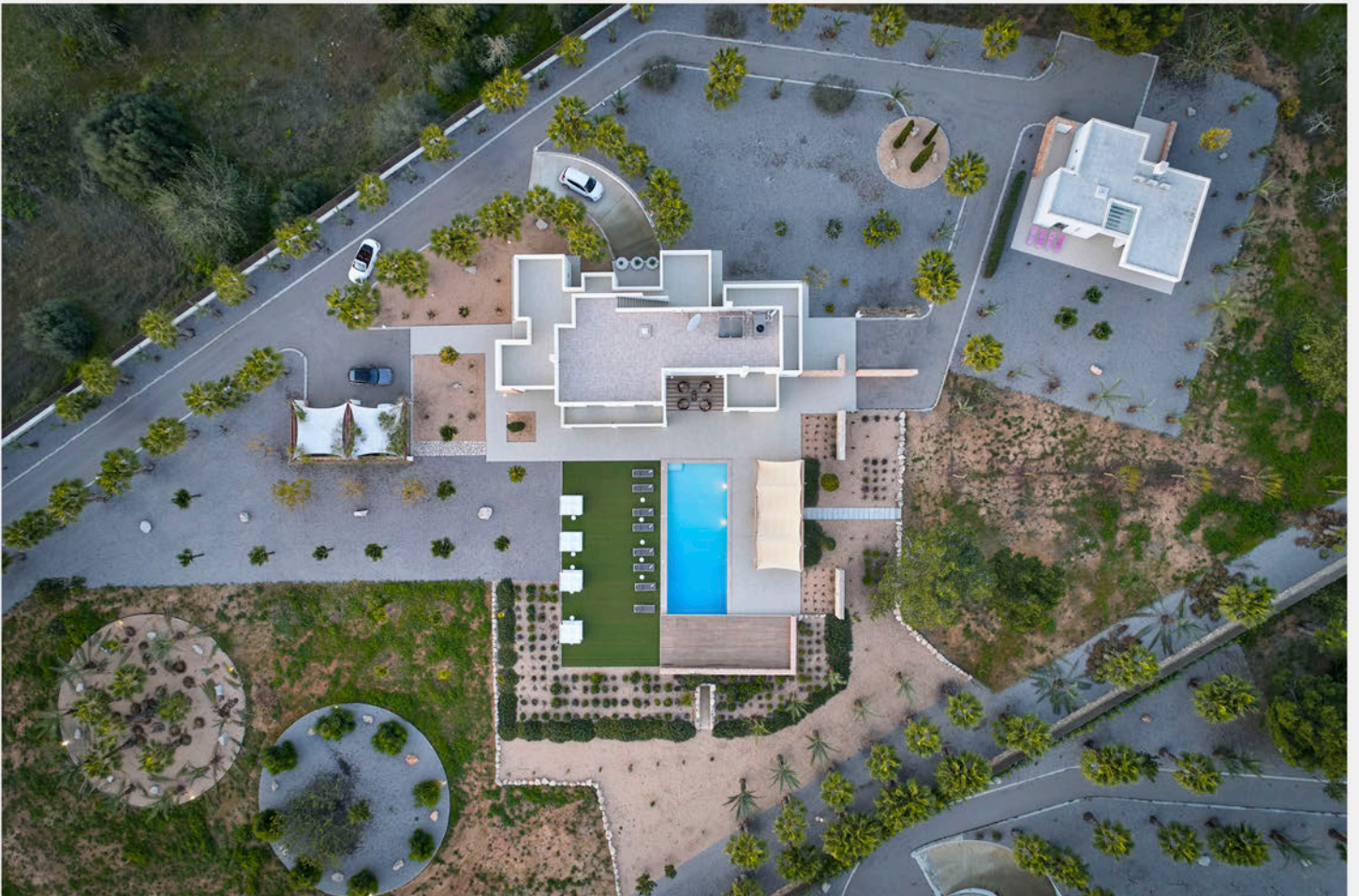


TOURIST RESIDENCE ACCREDITATION NUMBER
CAN SINATRA: N^o 2016024596

VILLA CAN SINATRA

AERIAL IMAGES

Located in the local town of Jesus, Can Sinatra has a main house of 400 m², divided over two floors, a guesthouse of 80 m² and a vast amount of land of over 16.000 m² with a swimming pool. Within the exterior parts of the property, there is also a 'chill out' area with hammocks, four poster Bali-styled beds and a barbecue zone with its own exterior eating areas.



VILLA CAN SINATRA

GARAGE

The property has outside and underground parking facilities with the latter offering a 10 car capacity.



VILLA CAN SINATRA

EXTERIORS



VILLA CAN SINATRA

EXTERIORS



VILLA CAN SINATRA

EXTERIORS



VILLA CAN SINATRA

EXTERIORS



VILLA CAN SINATRA

MAIN HOUSE - MAIN FLOOR

The main house consists of a large, fully equipped kitchen area with all the necessary electrical appliances; fridge, wine refrigerator, oven with a glass-ceramic hob, microwave, extractor, 2 (Nespresso and Dolce Gusto) coffee machines along with a dining table and chairs, plasma TV and glass cupboards.



VILLA CAN SINATRA

MAIN HOUSE - MAIN FLOOR

You can access the dining area straight from the kitchen; an area that combines a rustic style decor with a stone wall, wooden furniture and pristine white walls and high ceilings. The presence of a unique glass double levelled floor, gives a great sense of space and allows you to see part of the ground floor from above and vice versa. Also from the kitchen, there is access to a laundry area, which is fully equipped with all the necessary amenities; wash basin, washing machine, dryer and storage. From here you can access a reserved area for drying clothes and throwing away any waste in the supplied containers. The underground parking can also be accessed from here.



VILLA CAN SINATRA

MAIN HOUSE - MAIN FLOOR

Following on from the dining area we find ourselves in the living area; the perfect place to relax! A place from where you can enjoy spectacular views of the swimming pool, garden area and Dalt Vila thanks to its extraordinarily large windows.



VILLA CAN SINATRA

MAIN HOUSE - MAIN FLOOR



VILLA CAN SINATRA

MAIN HOUSE - MAIN FLOOR



VILLA CAN SINATRA

MAIN HOUSE - MAIN FLOOR

Another dining table is available in the living area along with a chimney and cinema area for you to be able to watch the best movies in a space created specifically for that purpose!



VILLA CAN SINATRA

MAIN HOUSE - MAIN FLOOR

There is a his and her guest toilet on the ground floor. This floor has two double bedrooms that are en suite, both with fitted wardrobes and plasma TV's.



VILLA CAN SINATRA
MAIN HOUSE - MAIN FLOOR



VILLA CAN SINATRA
MAIN HOUSE - MAIN FLOOR



VILLA CAN SINATRA
MAIN HOUSE - MAIN FLOOR



VILLA CAN SINATRA

MAIN HOUSE - FIRST FLOOR

A beautiful stairway decorated with tasteful plants opens the path to the first floor which is made up of three bedrooms. The main bedroom offers a double bed, an en suite bathroom and a private terrace with outdoor furniture.



VILLA CAN SINATRA
MAIN HOUSE - FIRST FLOOR



VILLA CAN SINATRA

MAIN HOUSE - FIRST FLOOR

The second bedroom disposes of two twin beds, an en suite bathroom and private terrace.



VILLA CAN SINATRA
MAIN HOUSE - FIRST FLOOR



VILLA CAN SINATRA

MAIN HOUSE - FIRST FLOOR

The third bedroom has a double bed and also offers an en suite bathroom and private terrace. Each bedroom has its own Plasma TV and panoramic views of Dalt Villa; a treasure trove of history in Ibiza! The second floor disposes of another big terrace, that practically borders the entire house.



VILLA CAN SINATRA
MAIN HOUSE - FIRST FLOOR



VILLA CAN SINATRA

MAIN HOUSE - GROUND FLOOR

However this magnificent villa doesn't cease here.

Those who have to fulfill their daily training routines will be able to do so without leaving the villa, for there is a fully equipped gym facility in the lower floor. Equipped with: bench presses, dumbbells, pull up bars, punching bag and weights. Fitness lovers will undoubtedly cherish this place.



VILLA CAN SINATRA

MAIN HOUSE - GROUND FLOOR

Ever wanted to go clubbing in your own house? Can Sinatra may fulfill this desire. A combination of the latest technologies, fantastic music and the fabulous lighting will make the guests tingle in joy while they party away amongst friends. Be prepared to surprise your guests with a private party in your villa.



VILLA CAN SINATRA

GUEST HOUSE

The Guest House has a special charm about it and is surrounded by palm trees typically found in an Oasis. The sunsets from the lounge area of this house are simply breathtaking and once the sun goes down, the porch is the perfect place to sip on a drink, play a game of cards or read a good book enjoying the evening air. The Guest House is accessible from the north entrance and has an incredible amount of natural light in its entrance hall thanks to the huge window in front. On the left hand side we move to the lounge area with an open plan kitchen and access to the porch area with hammocks to sunbathe and relax.



VILLA CAN SINATRA

GUEST HOUSE



VILLA CAN SINATRA

GUEST HOUSE

On the right hand side there is access to 2 bedrooms; one double en suite bedroom and one twin en suite bedroom with two single beds. Each room has its own Plasma TV and fitted wardrobe. There is an additional washing machine and reserved area to hang your clothes here too.



VILLA CAN SINATRA
GUEST HOUSE



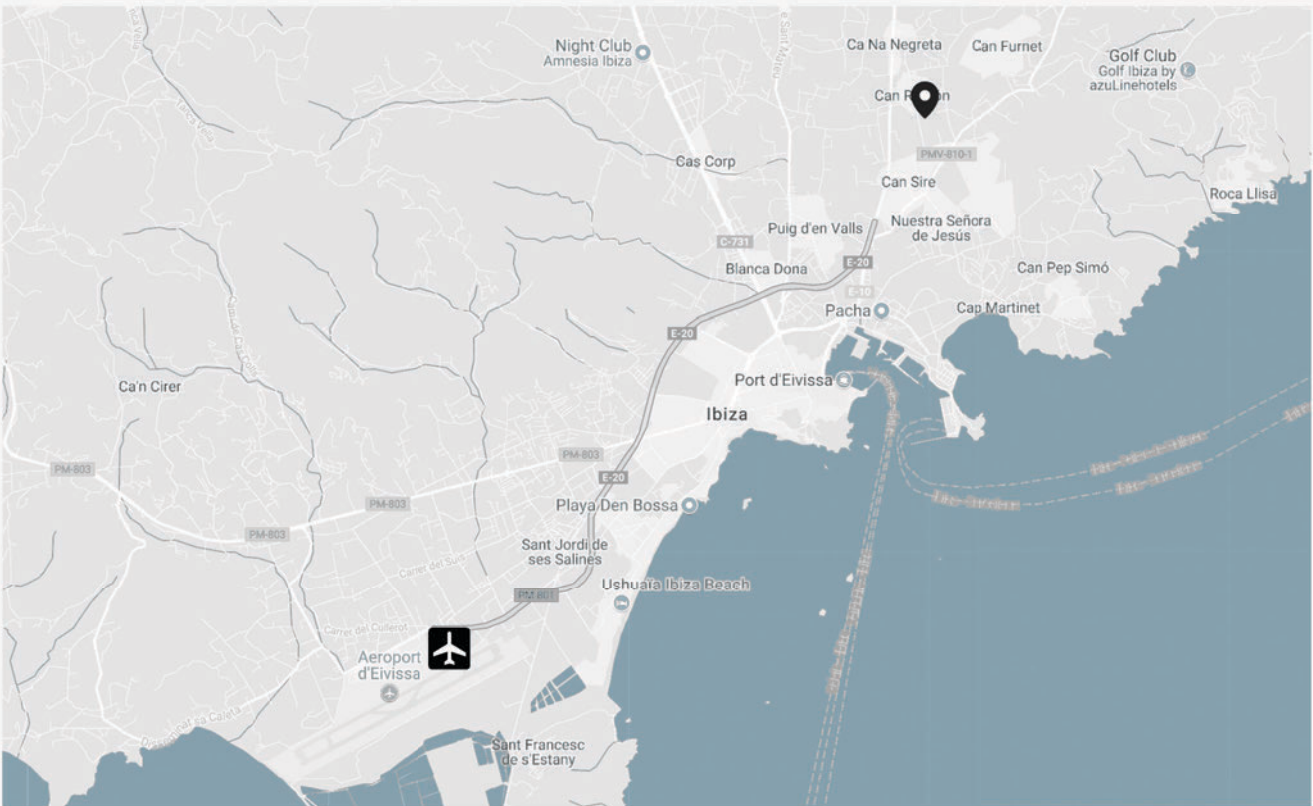
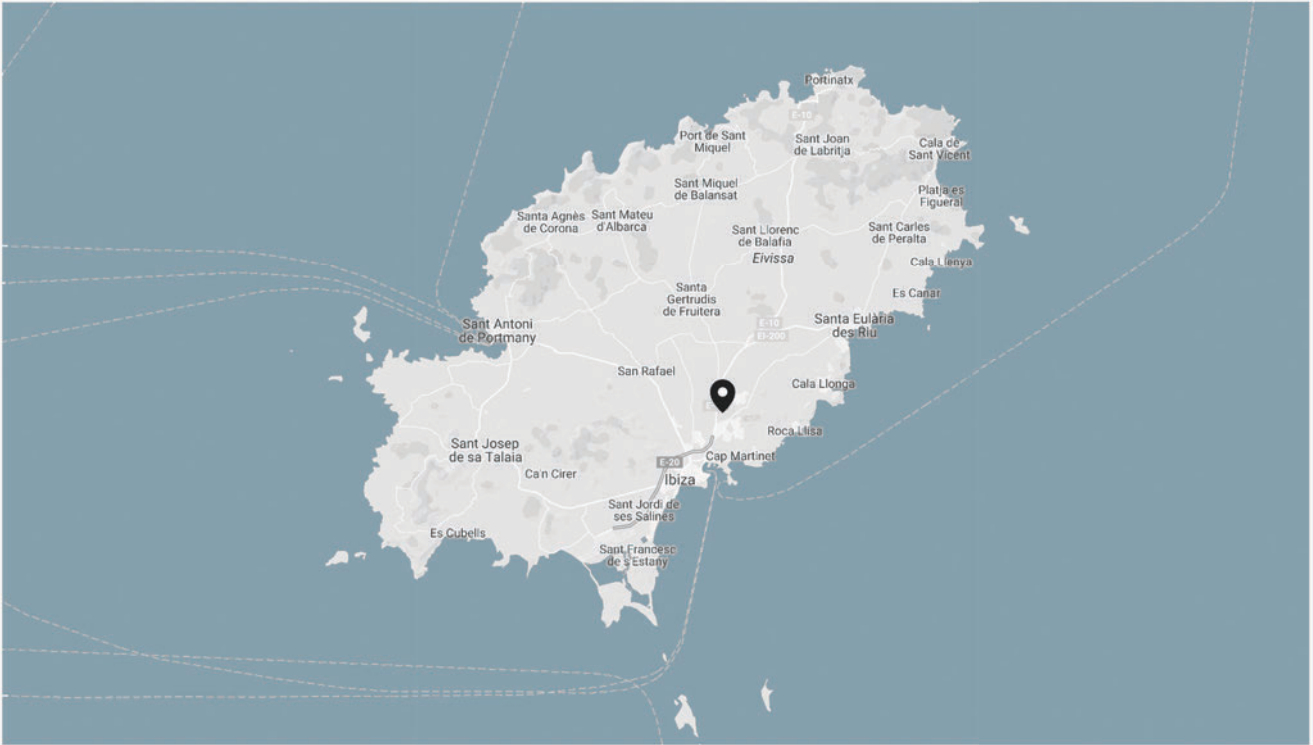
VILLA CAN SINATRA

GUEST HOUSE



VILLA CAN SINATRA

LOCATION



FROM IBIZA AIRPORT_11'9 KM DISTANCE/12 MIN. BY CAR